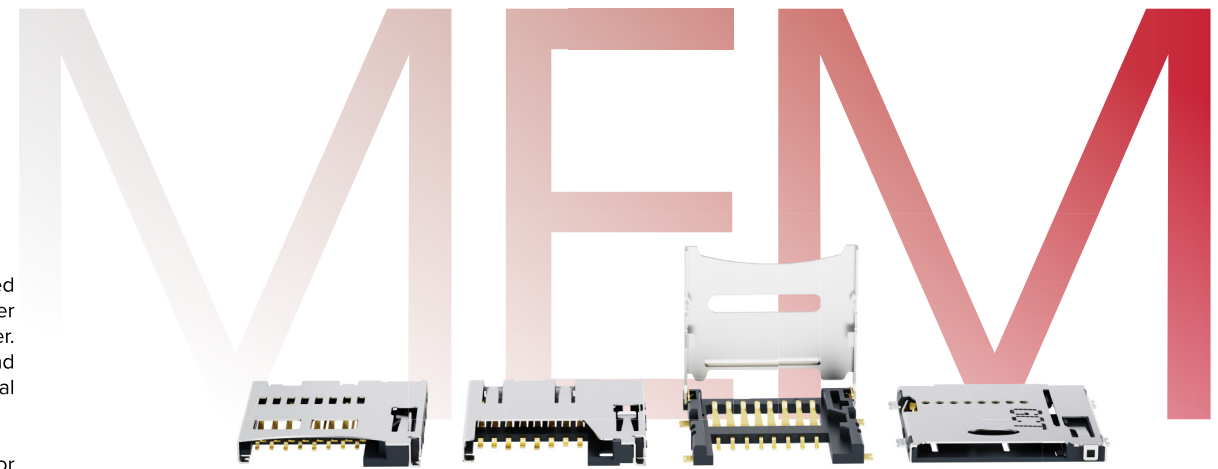


Memory Card Connector Selection Guide

GCT offers two types of connectors that are suitable for Micro SD cards: Push-Push style and Hinged style. The Push-Push style offers a built-in spring system, braking tabs and rib-wall in the inner housing, allowing the card to be inserted and extracted in a controlled, smooth and reliable manner. This eliminates the risk of the card falling out, sticking or becoming damaged on insertion and extraction. Additionally, the Push-Push style features a card detection switch, which is an electrical detection to ensure the card is correctly inserted or extracted.

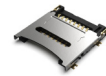
For environments that require extra security, GCT provides the hinged style connector. This connector locks down the card, minimising movement and ensuring a secure contact. In high vibration settings, the hinged style connector is the ideal choice for protecting your data.



MEM2052



MEM2061



MEM2067



MEM2075



MEM2080



MEM2085

	MEM2052	MEM2061	MEM2067	MEM2075	MEM2080	MEM2085
Card Type	Micro SD	Micro SD	Micro SD	Micro SD	Micro SD	Micro SD
Card Insertion Type	Push-Push	Push-Push	Hinged	Push-Push	Push-Push	Push-Pull
Profile	1.95mm	1.88mm	1.80mm	1.40mm	1.28mm	1.15mm
Card Detection Switch	Yes/Open	Yes/Closed	No	Yes/Open	Yes/Open	Yes/Open
With Locating Peg	No	No	No	Yes	No	No
No. of Contacts	8	8	8	8 (+1 for Switch)	8 (+2 for Switch)	8 (+1 for Switch)
Durability	10000 Cycles	5000 Cycles	5000 Cycles	5000 Cycles	5000 Cycles	5000 Cycles
Reel Quantity	1000	1000	1000	1000	2400	2500

