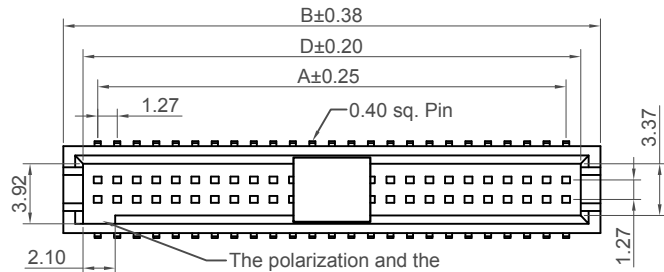
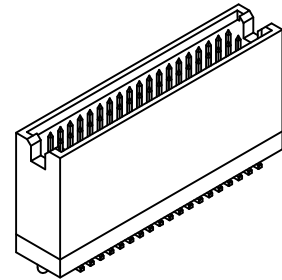
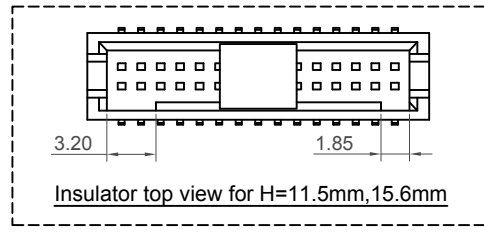


H
G
F
E
D
C
B
A

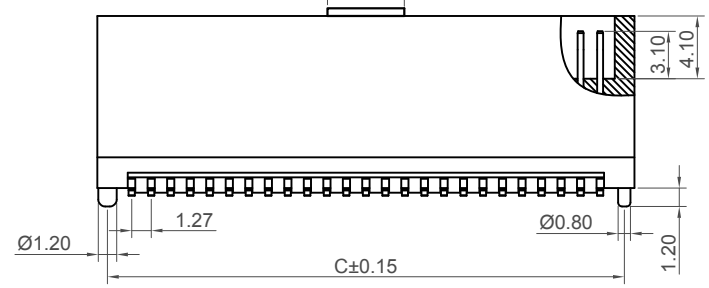


*Note: 3.20mm for H=8.40mm The polarization and the post will be the same end.

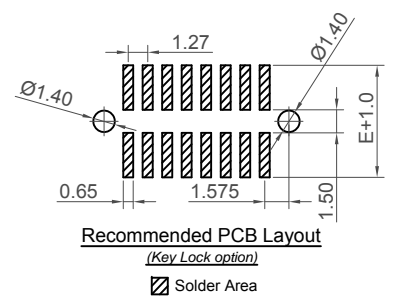
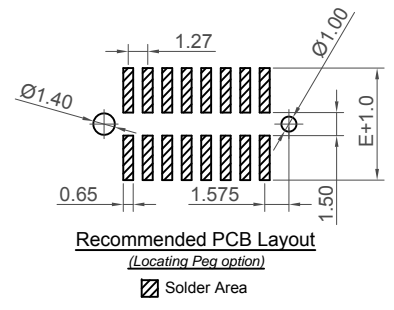
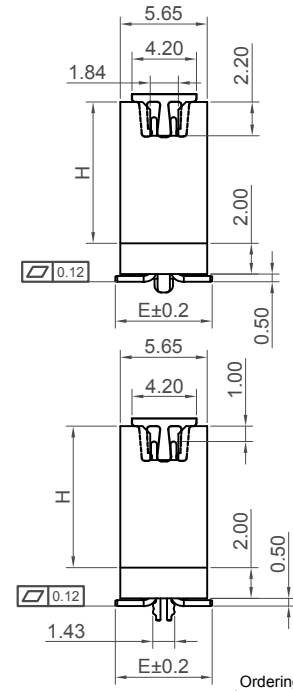
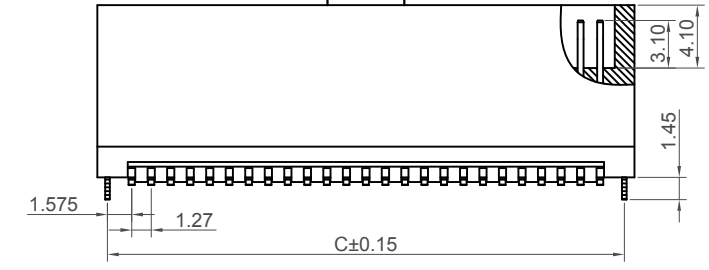


No. of Contacts	Dimensions			
	A	B	C	D
10	5.08	9.55	8.23	6.95
12	6.35	10.82	9.50	8.22
14	7.62	12.09	10.77	9.49
16	8.89	13.36	12.04	10.76
18	10.16	14.63	13.31	12.03
20	11.43	15.90	14.58	13.30
22	12.70	17.17	15.85	14.57
24	13.97	18.44	17.12	15.84
26	15.24	19.71	18.39	17.11
28	16.51	20.98	19.66	18.38
30	17.78	22.25	20.93	19.65
32	19.05	23.52	22.20	20.92
34	20.32	24.79	23.47	22.19
36	21.59	26.06	24.74	23.46
38	22.86	27.33	26.01	24.73
40	24.13	28.60	27.28	26.00
42	25.40	29.87	28.55	27.27
44	26.67	31.14	29.82	28.54
46	27.94	32.41	31.09	29.81
48	29.21	33.68	32.36	31.08
50	30.48	34.95	33.63	32.35
52	31.75	36.22	34.90	33.62
54	33.02	37.49	36.17	34.89
56	34.29	38.76	37.44	36.16
58	35.56	40.03	38.71	37.43
60	36.83	41.30	39.98	38.70
62	38.10	42.57	41.25	39.97
64	39.37	43.84	42.52	41.24
66	40.64	45.11	43.79	42.51
68	41.91	46.38	45.06	43.78
70	43.18	47.65	46.33	45.05
72	44.45	48.92	47.60	46.32
74	45.72	50.19	48.87	47.59
76	46.99	51.46	50.14	48.86
78	48.26	52.73	51.41	50.13
80	49.53	54.00	52.68	51.40

Locating Peg option



Key Lock option



Specifications

Material
Insulator Material

Standard: Polyamide, Nylon 6T, UL 94V-0
Option: Polymer, LCP, UL94V-0
Contact Terminal: Copper Alloy

Plating
See Ordering Grid

Electrical

Current Rating: 1A per pin
Contact Resistance: 20 mΩ max.
Insulating Resistance: 1000 MΩ min.
Dielectric Withstand Voltage: 300V AC

Soldering Process:
(Nylon 6T & LCP)
IR Reflow: 260°C for 10 sec.
Manual Solder: 350°C for 3-5 sec

Mechanical & Environmental
Operating Temperature: -40°C to +105°C

Mates with (Subject to pin length)
BD065 - Allowing perfect polarisation
Non-Polarised mating connections available
contact GCT for details

Ordering Grid

BD034-XX-X-XXX-X-XXXX-X-X

- No. of Contacts: 10 to 80
- Contact Plating: A = Gold Flash All Over (Standard), B = Selective Gold Flash Contact Area/Tin On Tail, C = Tin All Over, G = 10µ" Gold Contact Area/Tin On Tail, I = 30µ" Gold Contact Area/Tin On Tail
- Insulator Height 'H': 092 = 9.20mm (Standard), 115 = 11.5mm (Extra slot on insulator), 156 = 15.6mm (Extra slot on insulator). Please see Table A for all options
- Packing Options: D = Tube (Standard), B = Tape & Reel with cap, E = Tube with Cap
- Insulator Material: N = Nylon 6T (Standard), L = LCP
- Dimension E (1/100mm) (Footprint Width): 0630 = 6.30mm (Standard) or specify custom Footprint Width eg 0250 = 2.50mm
- Locating Peg: 0 = None, 1 = With Peg, 2 = With Key Lock

[Request Samples and Quotation](#)

TABLE A

Order Code	Insulator Height	Order Code	Insulator Height
070	7.00mm	102	10.20mm
074	7.40mm	115	11.50mm
076	7.60mm	121	12.10mm
082	8.20mm	122	12.20mm
083	8.30mm	132	13.20mm
084	8.40mm	136	13.60mm
087	8.70mm	153	15.30mm
090	9.00mm	156	15.60mm
092	9.20mm	166	16.60mm
095	9.50mm	169	16.90mm

Part Number BD034		Product Description 1.27mm Pitch Shrouded Pin Header Dual Row, Surface Mount, Vertical	
Drawing Date 3rd April 2008			
By	CC	Tolerances (Except as Noted)	Units: Metric (mm)
Detail	BD034 F PCN	Length X. ± 0.30 XX ± 0.25 X.XX ± 0.15 X.XXX ± 0.10	Angle X° ± 5° XX° ± 3° X.XX° ± 2° X.XXX° ± 1°
Revision	F	3rd Angle Projection	
Date	01/03/21	RoHS COMPLIANT 2011/65/EU Deca-BDE	

This drawing is confidential and copyright of Global Connector Technology, Ltd (GCT). This drawing must not be copied or disclosed without written consent. E & OE

GCT
www.gct.co

Not to Scale
Drawn By AE
Sheet No. 1/1